

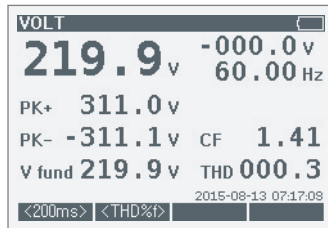
# WENS 550 Power Analyzer

## General Specifications

- 1Phase / Balanced Three-Phase
- Display : 240x160pixel, Mono Graphic LCD
- Backlight
- Power : 7.2V/2.5A NiMH Rechargeable Battery, 12V/2A Adaptor
- Differential Input
- Interface : Bluetooth, USB (Option)
- Real Time Clock
- Mutual Data transmit between 2 set of 550 and Arithmetic Calculation



## Electrical Specifications

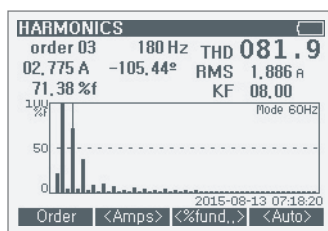


### DC Voltage Measurement : Auto/Manual

- DC/V : 1mV~600V(4V, 40V, 400V, 600V)
- Input Impedance : 1MΩ
- Accuracy : ±0.5% + 5dpts

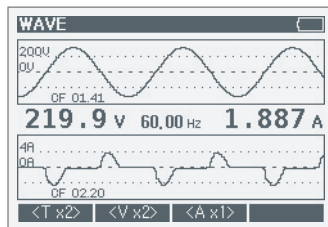
### AC Voltage Measurement : Auto/Manual

- AC/V : 1mV~600V(4V, 40V, 400V, 600V)
- Frequency : 40Hz~200Hz
- Input Impedance : 1MΩ
- Accuracy : ±0.5% + 5dpts



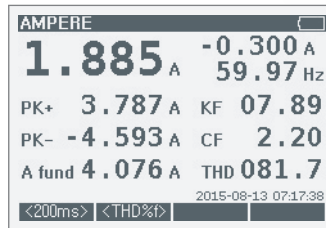
### Harmonic mode Graphic

- 1<sup>th</sup> ~ 50<sup>th</sup> • Harmonic value • % Volt or Current
- Chart Display



### Waveform Mode : Auto/Manual

- Mode : V, A • Bandwidth : DC to 100Hz, 100Hz~1KHz(non-specification)



### DC Current Measurement

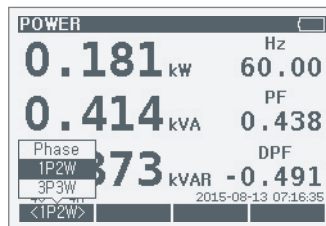
#### CT/Manual Measurement : Current Output Type

- CT, DC/A : 10mA~1,000A / 4A, 40A, 400A, 1,000A
- Accuracy : ±0.5% + CT Tolerance

### AC Current Measurement

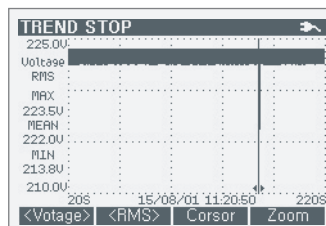
#### CT/Manual Measurement : Current Output Type

- CT, AC/A : 10mA~1,000A / 4A, 40A, 400A, 1,000A
- Frequency : 40Hz~200Hz
- Accuracy : ±0.75% + CT Tolerance



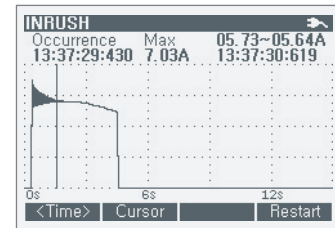
### Power Measurement Auto/Manual

- KVAH, VAR, KW
- Range : Voltage Range, Current Range Combination(16W~600kW)
- Minimum Resolution : 100mW(400W reference)
- Frequency : 40Hz~200Hz
- Power Factor



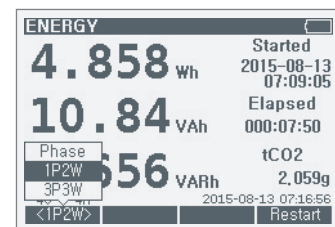
### Trend Mode

- Sampling Time • Cursor • Data Record



### Inrush mode

- Waveform : Time, Value
- Frequency : 40Hz~70Hz • Current



### Energy Measurement Auto

- Energy Metering (MVAh, VARh, MWh)
- CO2 Calculation : Display with Energy measurement simultaneously
- Frequency : 40Hz~200Hz

### THD - Total Harmonic Distortion

- THD-F, THD-R • Mode : Voltage, Current

### RPM - 550C only

- 6rpm ~ 120k rpm

### Frequency Counter - 550C only

- 0.1Hz ~ 3kHz

### Data Storage

- Snapshot : 20

### Event Analyzer

- Swell, Dip, Interrupt

## UPS Test Mode (550B/550C)

- **Voltage Stability :** Output Voltage variation rate ( $\pm 10\%$ ) from Input Voltage variation
- **Output Voltage :**  $\pm 5\%$
- **Total Harmonic Distortion :**  $\pm 3\%$
- **Overload Capability :** Record function (120%/10min, 150%/1min)
- **Drooping Characteristic :** Output voltage less than -10% from rating
- **Transient Response :** Voltage variation rate, Transient response speed, Stable time(Analyzed by Waveform)
- **Efficiency :** Ratio between Input voltage and Output voltage(Rectifier efficiency, Inverter efficiency, Total efficiency)
- **Input Inrush Current**
- **Input Power Factor :** Single phase(Input WATT /Input V\*), Three phase(Input WATT/ $\sqrt{3}$ InputV\*)

## Motor Test Mode (550C)

- **Rated Motor Output :** Active Power, Reactive Power, Apparent Power
- **Rated Motor Voltage**
- **Rated Motor Current**
- **Voltage. Current Variation(Voltage. Current decrease)**
- **Motor Frequency and RPM :** conversion Frequency to RPM
- **Motor Frequency and Voltage (V /Hz)**
- **Voltage Unbalance**
- **Current Unbalance**
- **Instantaneous Voltage Drop, Transient Phenomena**
- **High Frequency**



## Comparison by version model

Common	
Dimension & Weight	100mm(W) $\times$ 220mm(H) $\times$ 54mm(D), Approx800g
LCD Display	3.5" 240 $\times$ 160 pixel Graphic Mono LCD
Power Supply	7.2V 2.5AH NiMH Battery Pack or DC Power Adapter with Internal Charger
Safety Standard	CATIII 600V, EN/IEC61010-1, Pollution Degree2
PC Interface	Bluetooth
Standard Accessories	Test Lead, Operator manual, PC Interface S/W, NiMH Battery Pack, 12V Adapter, Carrying Bag
Optional Accessories	CT(Current Adapter)

Function Model	550A	550B	550C
DCV	1mV~600V	1mV~600V	1mV~600V
ACV	1mV~600V	1mV~600V	1mV~600V
DC/A	10mA~1,000A	10mA~1,000A	10mA~1,000A
AC/A	10mA~1,000A	10mA~1,000A	10mA~1,000A
Power	10mW~600kW	10mW~600kW	10mW~600kW
Energy	✓	✓	✓
Waveform Mode	DC to 100Hz	DC to 100Hz	DC to 100Hz
Inrush	✓	✓	✓
Harmonic	1 <sup>th</sup> ~ 50 <sup>th</sup>	1 <sup>th</sup> ~ 50 <sup>th</sup>	1 <sup>th</sup> ~ 50 <sup>th</sup>
THD	✓	✓	✓
RPM	✓	✓	✓
F/Counter			0.1Hz ~ 3kHz
Trend	✓	✓	✓
Data Storage	20	20	20
Balanced Three-Phase	✓	✓	✓
UPS Test Mode		✓	✓
Motor Test Mode			✓

## Function Key



### 550A, B, C

- A : Power Meter Basic
- B : Power Meter + UPS
- C : Power Meter + UPS + Motor