

## InCTRL Web-based Data Analysis And Reporting



**The InCTRL Software Program  
Makes Ultrasound Data  
Available Anywhere You Have  
Access To The Web.**

InCTRL incorporates CTRL technology and innovation for improved maintenance practices, cost savings, and equipment reliability.

The solution combines a data management and analysis system with data collection software and ultrasound sensors for condition based monitoring of critical mechanical equipment, pressure and vacuum leak detection, and detection of electrical arcing and discharge.

The InCTRL System, combined with SoundCTRL and the UL101, is uniquely designed to give forward-thinking organizations unparalleled control over their equipment and systems.

### **Make informed corporate and management decisions**

InCTRL is a web-based application that provides equipment summary information for corporate executives and upper-level management. You now have the necessary information for capital investment and projects that was previously only available to the technician.

### **Develop corporate standards for monitoring critical equipment**

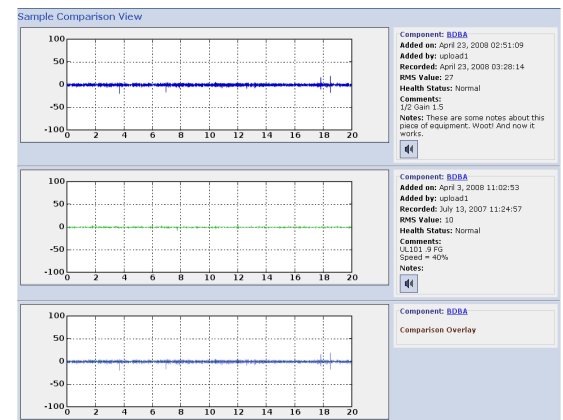
Use InCTRL to gather information and help develop procedures for testing critical equipment from various locations. You can assimilate the practices and procedures together into a corporate standard for benchmarking.

### **Share test data and results between locations**

InCTRL is ideal for companies that have multiple plants or service centers around the world. The data can be shared easily. Upper management has access to all of the compiled information in summary and detail reports.

### **Train new technicians and managers quickly**

It is easy to use the CTRL's UL101 Ultrasound Sensor and SoundCTRL Data Collection Software. It is even easier to use InCTRL to gather information and help train others to understand the analysis of the ultrasound data provided by the UL101. New technicians and managers can quickly become experts at diagnosing equipment for mechanical defects and lubrication problems.



### **Equipment Condition Reporting & Analysis**

## InCTRL Web-Base Application Specifications

### Minimum Requirements:

Latest Version of Internet Explorer or Firefox

### Data Storage:

Initial Maximum: 3 GB  
(100 test points/month for > 6 years)  
Upgrade: 1 GB intervals

## Reasons To Consider InCTRL

### Trend ultrasound test data

InCTRL gives you the tools for trending the data output from the UL101 over time to watch for early signs of equipment wear.

### Compare ultrasound test data

Compare current test results with previous results or baselines from the same test point or other test points of the same equipment.

### Flag suspect equipment

Set thresholds for your equipment. When the ultrasound amplitude exceeds the threshold, the equipment will automatically be flagged as suspect and require a call to action.

### Manage critical equipment and data

You can manage your critical equipment with InCTRL by defining the location, equipment ID, and test points for ultrasound testing.

### Share information easily

You can share data and reports from any computer that has access to the Web. You can also create a list of individuals who will be notified when a piece of equipment has been flagged.

### Create reports

Your ultrasound data and analysis is summarized into reports for individual pieces of equipment or entire locations. Get a quick snapshot of the overall health of your equipment for planning and production

## InCTRL Connector Application Specifications

### License

Windows Desktop PC License

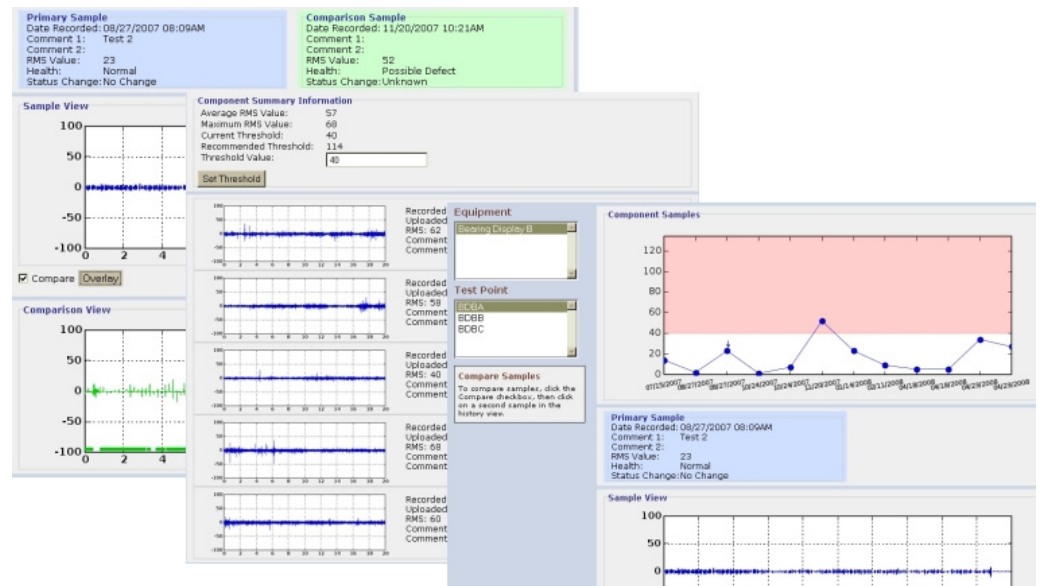
### Minimum Requirements:

Microsoft Windows 2000 / XP  
Microsoft .NET Framework 2.0  
265MB System Memory  
300MB Hard Disk Space

## InCTRL Connector Application

InCTRL manages the data captured by SoundCTRL and the UL101 ultrasound software. The InCTRL Connector application is a Windows PC based utility to make the management of your SoundCTRL data files more convenient.

The connector allows for batch uploading of SoundCTRL data to the InCTRL Web-Based application. It will also attempt to automatically assign samples to their appropriate test points, and move or copy your data from your synchronization folder to your history folder.



CTRL Systems, Inc.  
1004 Littlestown Pike, Suite H  
Westminster MD, 21157  
USA  
www.ctrlsys.com

## InCTRL Web-Base Application